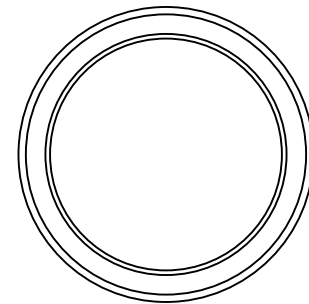
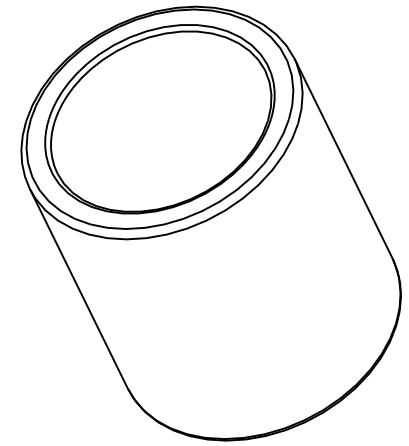


SECTION A-A



All dimensions in inches

NOTE1: Impregnated with 100 Grade R&O turbine oil unless otherwise specified

NOTE2: Typical PM Chamfers All Corners

MATERIAL:  
 CT-1000-K26 (SAE 841)  
 Sintered Bronze

DRAWING NOT TO SCALE

**SYMMCO INC.**  
 Bronze Sleeve Bearing  
**SS-2228-16**  
 11/16 ID 7/8 OD 1 LEN