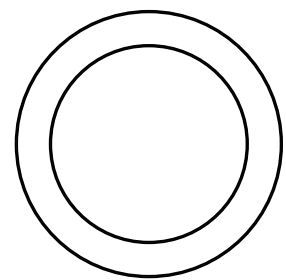
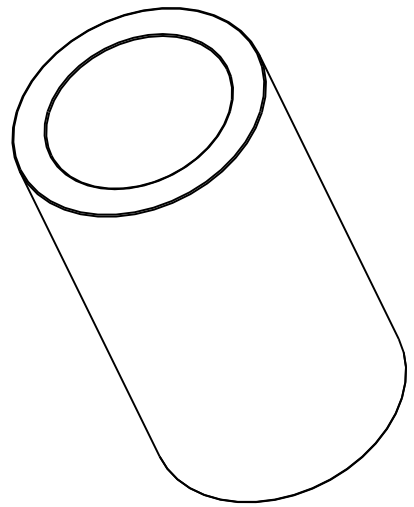


SECTION A-A



All dimensions in inches

NOTE 1: Impregnated with 100 Grade R&O turbine oil unless otherwise specified

NOTE 2: Bars will finish to dimensions shown

MATERIAL:
 CT-1000-K26 (SAE 841)
 Sintered Bronze

DRAWING NOT TO SCALE

SYMMCO INC.
 Bronze Cored Bar Stock
SCS-2230-6
 2-3/4 ID X 3-3/4 OD X 6-1/2 LEN